

Unit 2 – Warmup – Tongued Notes

The note E

Two staves of music in 4/4 time. The first staff shows four measures, each starting with a half note E (first line) followed by a whole rest. The second staff shows four measures of eighth notes: E (first line), F (first space), G (second line), and A (second space), with a quarter rest following each note.

The note D

Two staves of music in 4/4 time. The first staff shows four measures, each starting with a half note D (second line) followed by a whole rest. The second staff shows four measures of eighth notes: D (second line), E (first space), F (first space), and G (second line), with a quarter rest following each note.

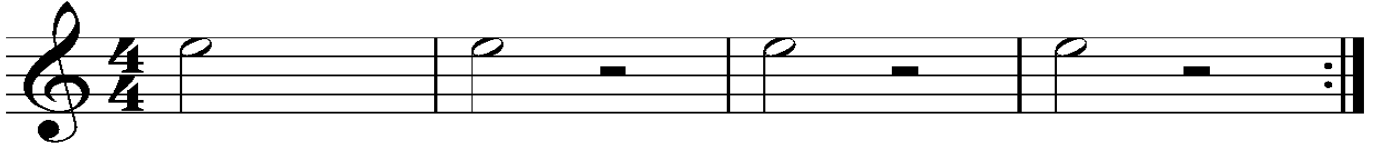
The note C

Two staves of music in 4/4 time. The first staff shows four measures, each starting with a half note C (first space) followed by a whole rest. The second staff shows four measures of eighth notes: C (first space), D (second line), E (first space), and F (first space), with a quarter rest following each note.

E Tunes

Tangoed on E's

4 clicks in



Jazzy E's



Pop Goes E



Canon Ball E



Drum on E's



Eddy E Reggae



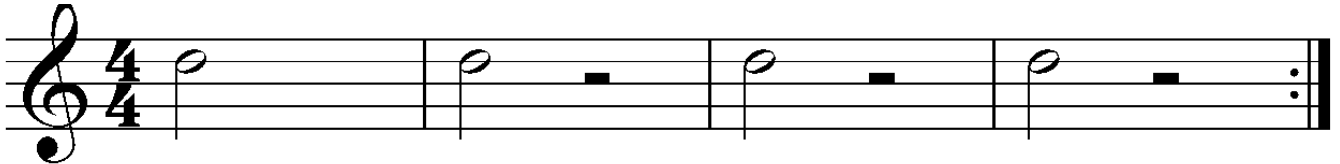
Blues on E



D Tunes

Tangoed on D

4 clicks in



Jazzy D's



Pop Goes D



Canon Ball D



Drum on D's



Doggy D Reggae



53



Blues on D



61



Mardi Gras



Groovy Mix



County Army

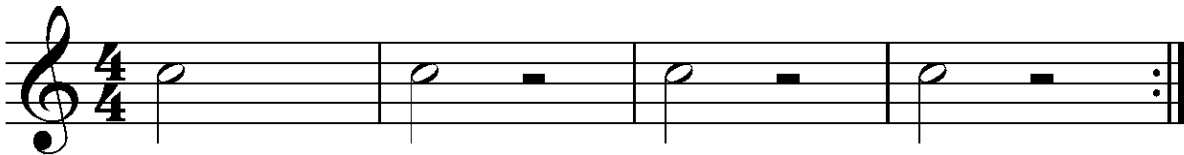


C Tunes



Tangoed on C's

4 clicks in



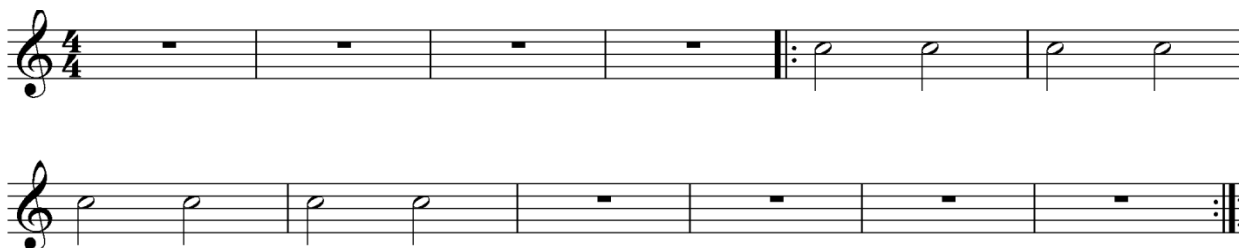
Jazzy C's



Pop Goes C



Cannon Ball C





Drum on C's



Charlie C Reggae

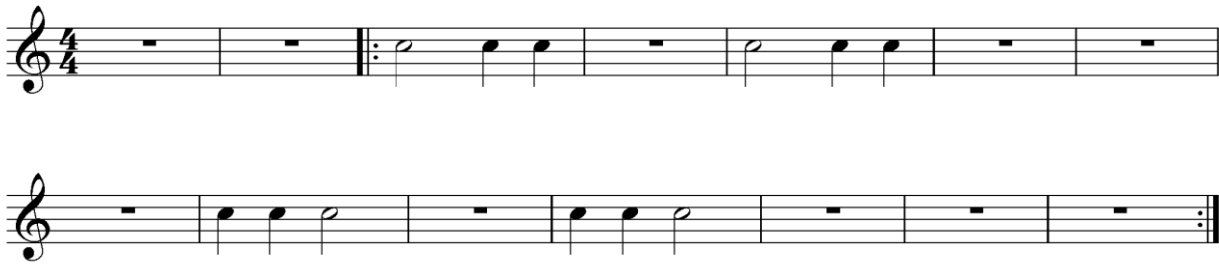


Blues on C

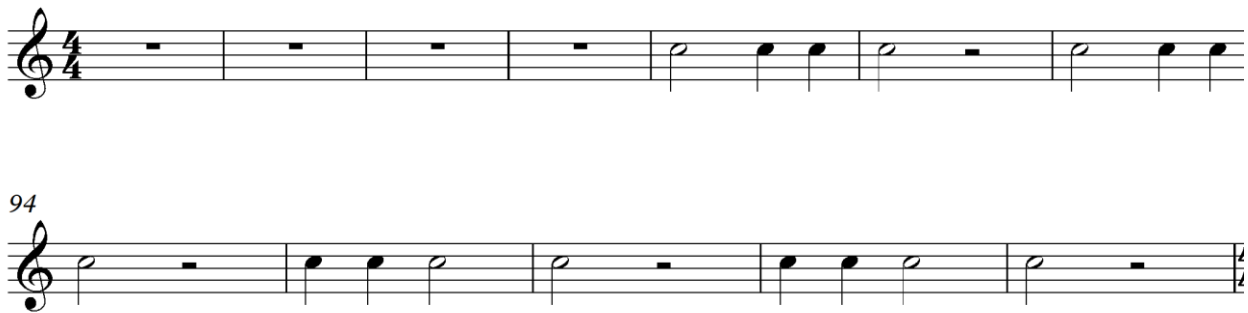




Mardi Gras



Groovy Mix



County Army

