

# Unit 8 – Concert Time



Ludwig van Beethoven.  
Geb. 16. Dez. 1770 in Bonn, gest. 26. März 1827 in Wien.

**Played introduction: D D E #F | E D D \_\_\_ | sing words**

Oboe, clarinet, flute and chalumeau,  
Reeds and tone holes, high, shrill sounds  
Violins, cellos, harp and double bass  
Pluck and bow to make them sound.

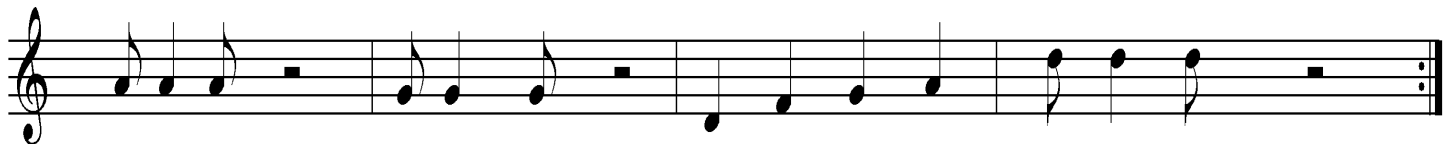
Trumpets, trombone, French horns, tuba,  
Valves and slides and made from brass.  
Snare drum, timpani struck with sticks  
Tambourine shaken, cymbals crash.

**Played introduction: G G A B | A G G \_\_\_ |**

The musical notation consists of four staves in 4/4 time. The first staff includes letter names: B B C D D C B A G G A B B A A \_\_\_

## Hand Jive Blues

Played introduction: **D FGA | DDD**



Played outro: **D FGA | DDD**

### Hand Jive Actions

- Clap hands together twice – pat hands on knees twice
- Slide hands across each other 4 times
- Clap hands together twice – pat hands on knees twice
- ‘Mashed potato’ - 4 times
- Clap hands together twice – pat hands on knees twice
- ‘Hitch hiker’ – 4 times